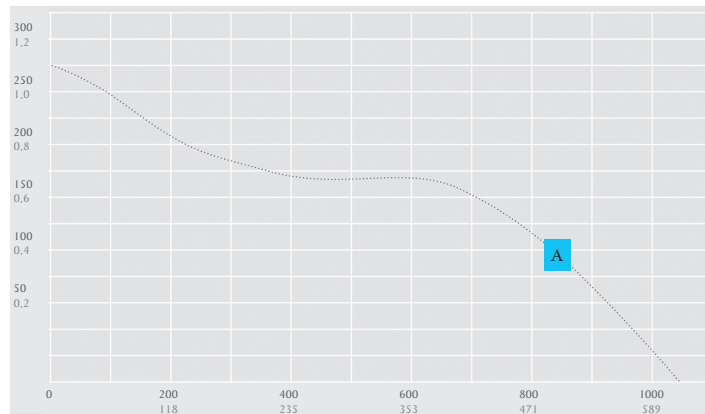


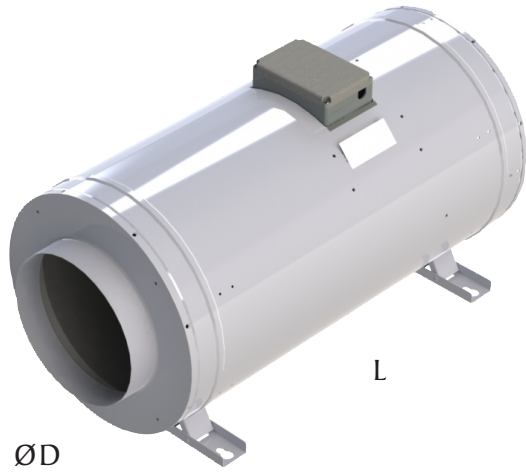
EMIK

The flexible tube extract fan

- Easy installation, indoor and outdoor
- Roof, wall and inline assembly
- Horizontal or vertical positioning
- For mounting, we recommend using cushioned clamps to reduce noise transmission into the ducting system
- Insulation Class Motor: F
- IP Complete Unit: IPX4
- Energy saving fan with highest aerodynamic efficiency



Type	U_N V	f_N Hz	I_{max} A	P_N W	V cfm / m ³ /h	η_t %	η_{st} %	L_{WA5} dB(A)	L_{WA6} dB(A)	L_{WA2} dB(A)	t_a °C	t_m °C	Weight (lbs)	$\varnothing \times L$ in
A EMIK 200 E2 (8")	230V	~50	0,6	118	623 / 1058	31	30	66	77	53	60	60	10,0	3,9 x 25,3



- Weather-resistant galvanized steel sheet housing
- 3 speed steps selectable through an external step switch
- Compact and complete
- Built-in thermostatic switch with automatic reset
- Incorporated diagonal fan with three-dimensionally shaped rotor and stator blades